

# DPR master

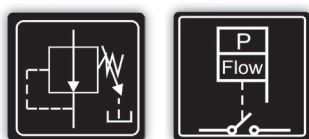
Digital Pressure Regulator

Digital pump driver for 2 pumps systems on **duty-assist** operation at constant outlet pressure.

**DPR master** is made up of 2 communicated **DPR** units for automatic control and protection of 2 electric pumps up to 2,2 kW (3 HP), multi-voltage (110-230 V) and equipped with an innovative outlet pressure reducing/regulating system. These 2 pumps will operate in **duty-assist** operation mode.

Each pump is managed and protected by a unit **DPR**, operating in cascade and with alternated starting sequence - this means that first pump to start will change in each operation cycle, the second pump will start, only, if the first pump cannot afford the flow demand.

**DPR master** includes all the same features of an standard **DPR**.



**DPR master**

**DPR master IN-OUT**



Low Voltage Directive 2014/35/EC  
Electromagnetic Compatibility 2014/30/EC  
RoHS 2011/65/EC + 2015/863/EC

## OPERATING CHARACTERISTICS

- Duty-assist operation.
- Power relays to manage 2 electric pumps up to 2,2 kW (3 HP).
- Multi-voltage power supply: 110-230 V.
- Manual regulation of the constant outlet pressure with integrated adjusting tool.
- Outlet pressure indicator with pointer.
- Digital adjustment of the start pressure.
- Digital pressure gauge (bar/psi).
- Inner flow sensor.
- Inner current sensor with instantaneous digital reading.
- Functions: **APR** (Anti-blocking periodic routine), **ART** function (Automatic Reset Test), **An**-**ti-flooding**, **Stand-by** mode.
- Protection against: dry-run operation, overcurrent, over-pressure, low-pressure, fast-cycling, flooding, rotor locking.
- Control panel includes: 3-digit display, flow indicator, bar/psi indicator, alarm indicator and push-buttons.
- Register of operation data and alarms.
- Reserve against leaks in the installation.
- **DPR master IN-OUT**: Connection for external input (float switch, time switch...) and for volt-free contact for alarms monitoring.
- Inlet and outlet hydraulic threads: G1", G1-1/4", NPT1", NPT1-1/4".